



LIGHTLE BECKNER ROBISON

INCORPORATED

COMMERCIAL REAL ESTATE SERVICES

Leaders By Performance

RETAIL/ OFFICE LEASE

Melbourne, FL

University Plaza 101 W. Florida Ave. Palm Bay, FL



JEFFERY T. ROBISON

PARTNER

(321) 722-0707 EXT. 13

Jeff@LBRCREScm

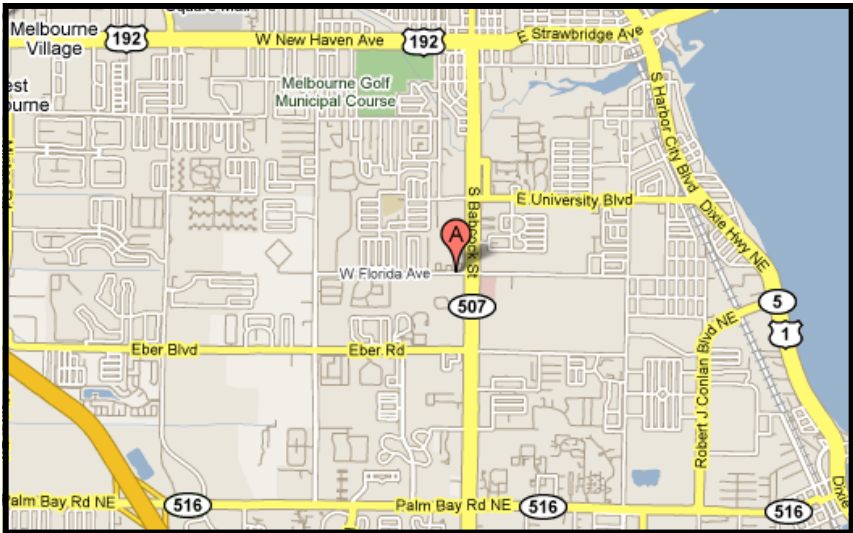
www.LBRCREScm

1398 S. BABCOCK ST.
MELBOURNE, FL 32901
CELL (321) 508-9462
FAX (321) 722-0581

AVAILABILITY:	1,500 sf 1,500 sf 1,500 sf 2,000 sf
LEASE RATE:	\$15.00/sf plus \$5.00/sf CAM
IMPROVEMENT:	Retail center at the outparcel of Walmart's Neighborhood Market.
COMMENTS:	Just south of Florida Tech and across from Melbourne Central Catholic High School. Located just off Babcock St. midway between US 192 (New Haven) and Palm Bay Rd.

Information contained herein has been obtained from others and considered to be reliable; however, a prospective purchaser or lessee is expected to verify all information to his/her own satisfaction.

University Plaza 101 W. Florida Ave., Palm Bay, FL




LIGHTLE BECKNER ROBISON
INCORPORATED
COMMERCIAL REAL ESTATE SERVICES

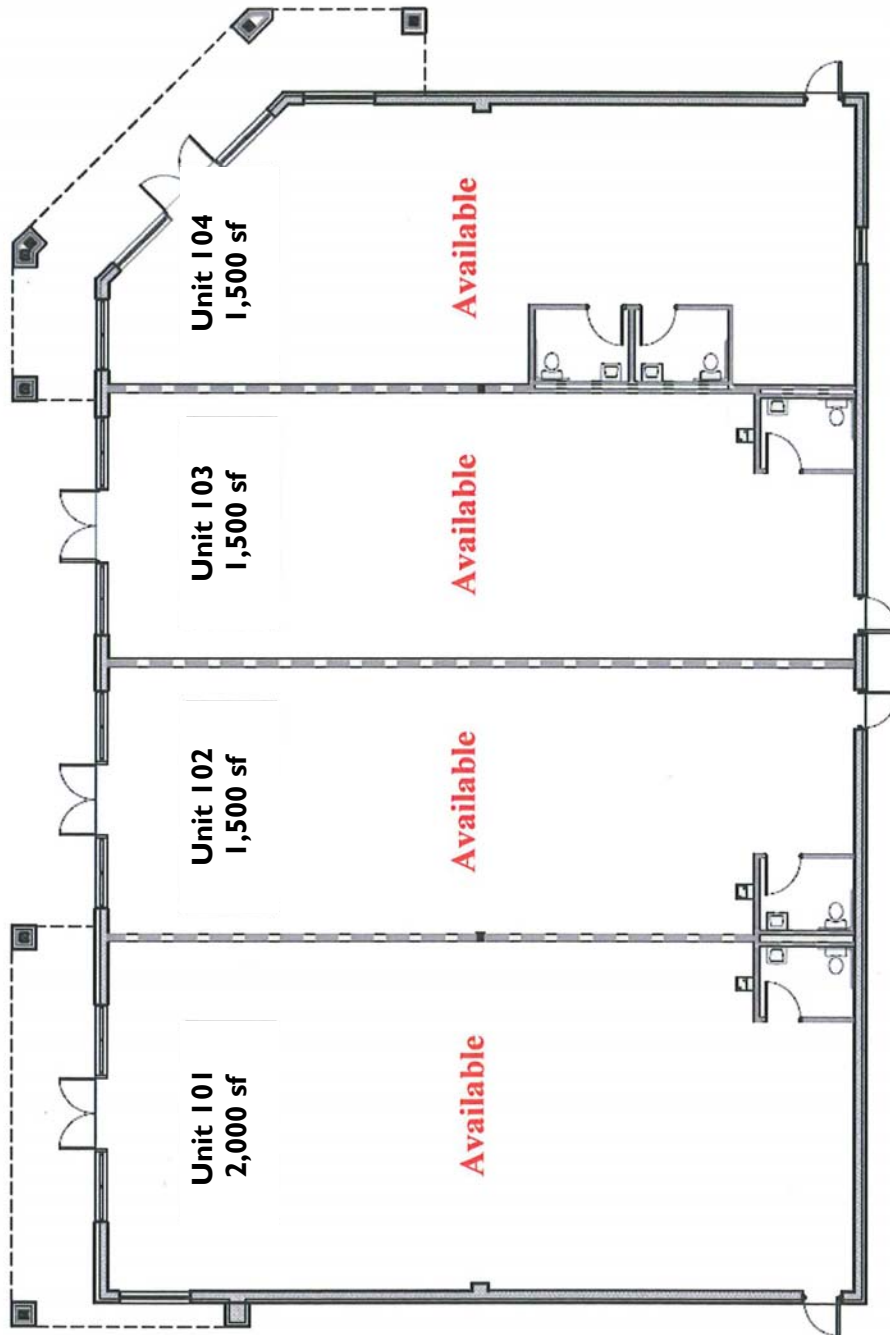
JEFFERY T. ROBISON, PARTNER
(321) 722-0707 EXT. 13
Jeff@LBRCRE.com www.LBRCRE.com
1398 S. BABCOCK ST. MELBOURNE, FL 32901

Information contained herein has been obtained from others and considered to be reliable; however, a prospective purchaser or lessee is expected to verify all information to his/her own satisfaction.

Babcock St.



University Plaza



Florida Ave.


LIGHTLE BECKNER ROBISON
INCORPORATED
COMMERCIAL REAL ESTATE SERVICES

JEFFERY T. ROBISON, PARTNER

(321) 722-0707 EXT. 13

Jeff@LBRCRE.com www.LBRCRE.com

1398 S. BABCOCK ST. MELBOURNE, FL 32901

Information contained herein has been obtained from others and considered to be reliable; however, a prospective purchaser or lessee is expected to verify all information to his/her own satisfaction.