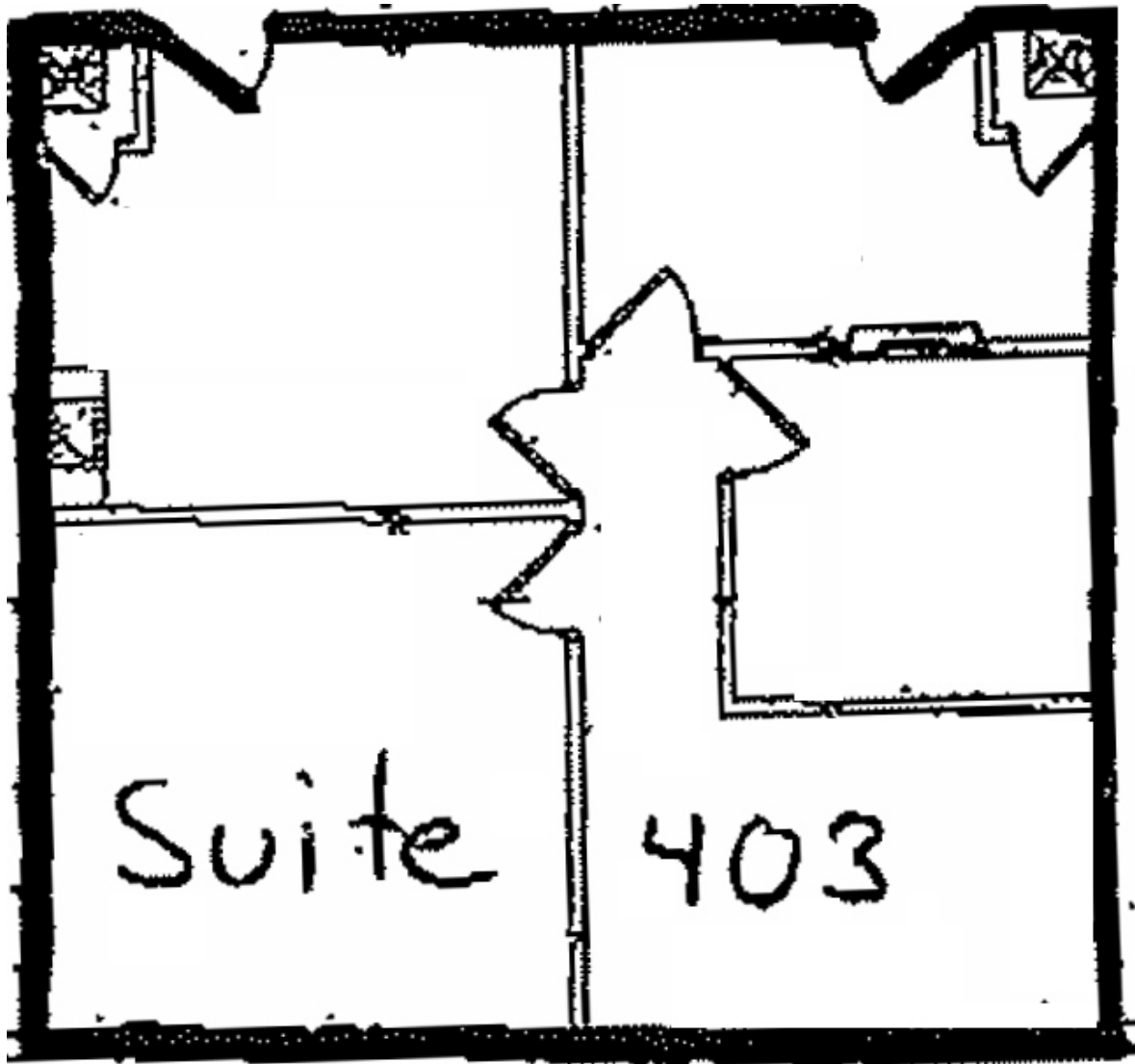


1101 Hibiscus Blvd.

#403-900 sf



**ROB BECKNER**

**PARTNER**

(321) **722-0707** EXT. 11

[Rob@lightlecommercial.com](mailto:Rob@lightlecommercial.com)



**LIGHTLE COMMERCIAL**

INCORPORATED

COMMERCIAL REAL ESTATE SERVICES

1398 S. BABCOCK ST. • MELBOURNE, FL 32901

FAX (321) 722-0581

[WWW.LIGHTLECOMMERCIAL.COM](http://WWW.LIGHTLECOMMERCIAL.COM)

*Information contained herein has been obtained from others and considered to be reliable;  
however, a prospective purchaser or lessee is expected to verify all information to his/her own satisfaction.*