



LIGHTLE COMMERCIAL

◀ INCORPORATED ▶

COMMERCIAL REAL ESTATE SERVICES

Leaders By Performance

RETAIL SPACE FOR LEASE

W. Melbourne, FL

JEFF ROBISON

PARTNER

(321) 722-0707 EXT. 13

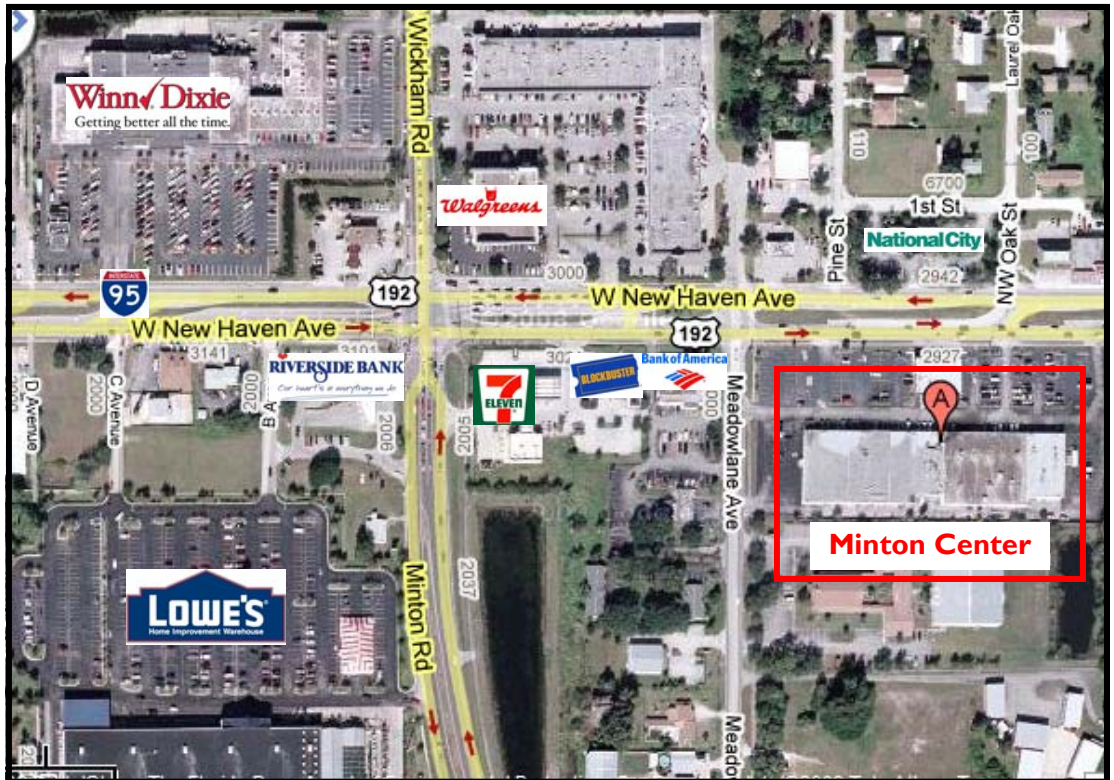
jeff@lightlecommercial.com

www.lightlecommercial.com

1398 S. BABCOCK ST.
MELBOURNE, FL 32901
FAX (321) 722-0581

Minton Center

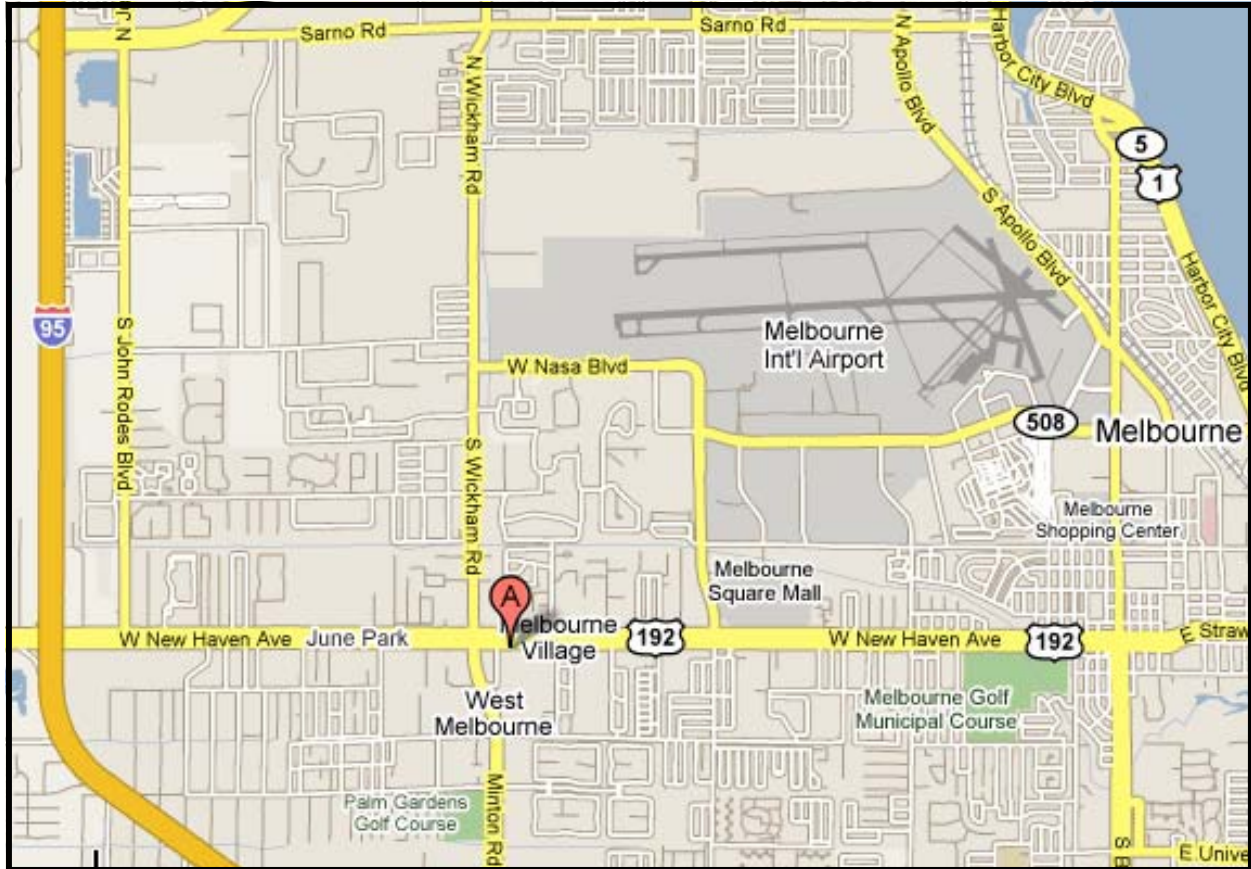
2955 W. New Haven Ave. (US 192) Melbourne, FL



AVAILABILITY:	23,000± sf
LEASE RATE:	\$8.00/sf plus \$2/sf NNN
COMMENTS:	Retail opportunity on US 192 in Melbourne. Highly visible and high traffic counts. US 192 is the "Retail Artery" of South Brevard!

Information contained herein has been obtained from others and considered to be reliable; however, a prospective purchaser or lessee is expected to verify all information to his/her own satisfaction.

Minton Center
2955 W. New Haven Ave. (US 192) Melbourne, FL



	1 mile	3 mile	5 mile
2008 Total Daytime Population	8,987	55,177	144,601
2008 Average Household Income	\$69,844	\$60,608	\$57,535

JEFF ROBISON
PARTNER
 (321) **722-0707** EXT. 13
jeff@lightlecommercial.com


LIGHTLE COMMERCIAL
INCORPORATED
COMMERCIAL REAL ESTATE SERVICES
 1398 S. BABCOCK ST. • MELBOURNE, FL 32901
 FAX (321) 722-0581
WWW.LIGHTLECOMMERCIAL.COM

Information contained herein has been obtained from others and considered to be reliable; however, a prospective purchaser or lessee is expected to verify all information to his/her own satisfaction.