



LIGHTLE COMMERCIAL

◀ INCORPORATED ▶

COMMERCIAL REAL ESTATE SERVICES

OFFICE FOR SALE OR LEASE

Viera, FL

7331 Office Park Place—Viera, FL Corporate Park at Viera



**\$21.00 GROSS or
\$449,000.00**



BRIAN L. LIGHTLE

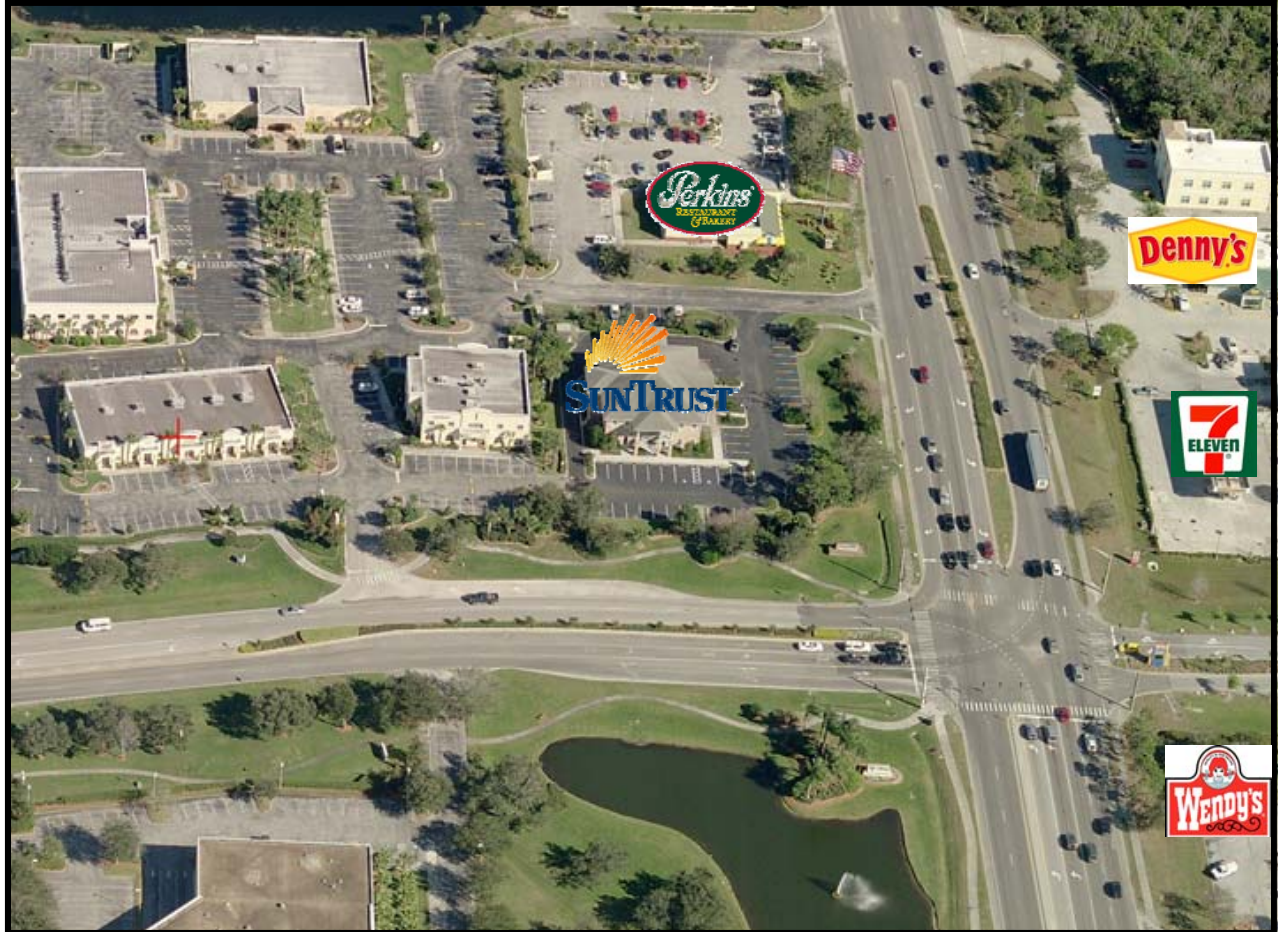
(321) 722-0707 EXT. 14

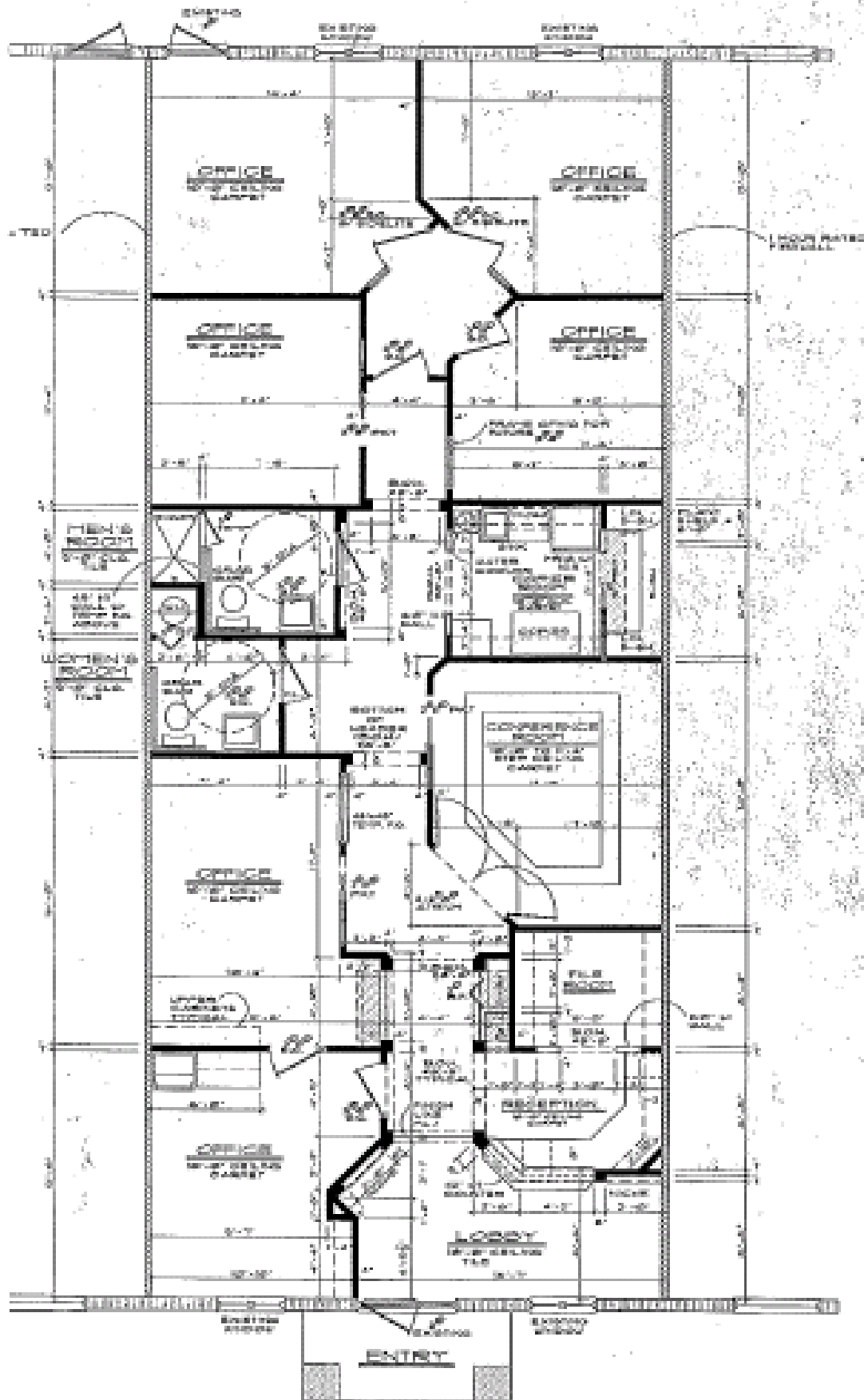
Licensed Real Estate Broker
www.lightlecommercial.com

1398 S. BABCOCK ST.
MELBOURNE, FL 32901

AVAILABILITY:	2000 sf
ADDRESS:	7331 Office Park Place—Viera, FL
PRICE:	Lease: \$21.00 Gross Sale: \$449,000.00
IMPROVEMENT:	Built out with six offices, conference room, kitchen area, lobby and reception.
COMMENTS:	Awesome Viera location!!!!
CONTACT:	Brian L. Lightle 321-722-0707 x 14 Brian@lightlecommercial.com

Information contained herein has been obtained from others and considered to be reliable; however, a prospective purchaser or lessee is expected to verify all information to his/her own satisfaction.





FLOOR PLAN