



LIGHTLE COMMERCIAL

◀ INCORPORATED ▶

COMMERCIAL REAL ESTATE SERVICES

Leaders By Performance

**VACANT
COMMERCIAL
LAND**

**FOR
SALE**

Melbourne, FL

**7810 N. Wickham Rd.
Melbourne, FL**



JEFF ROBISON

PARTNER

(321) 722-0707 EXT. 13

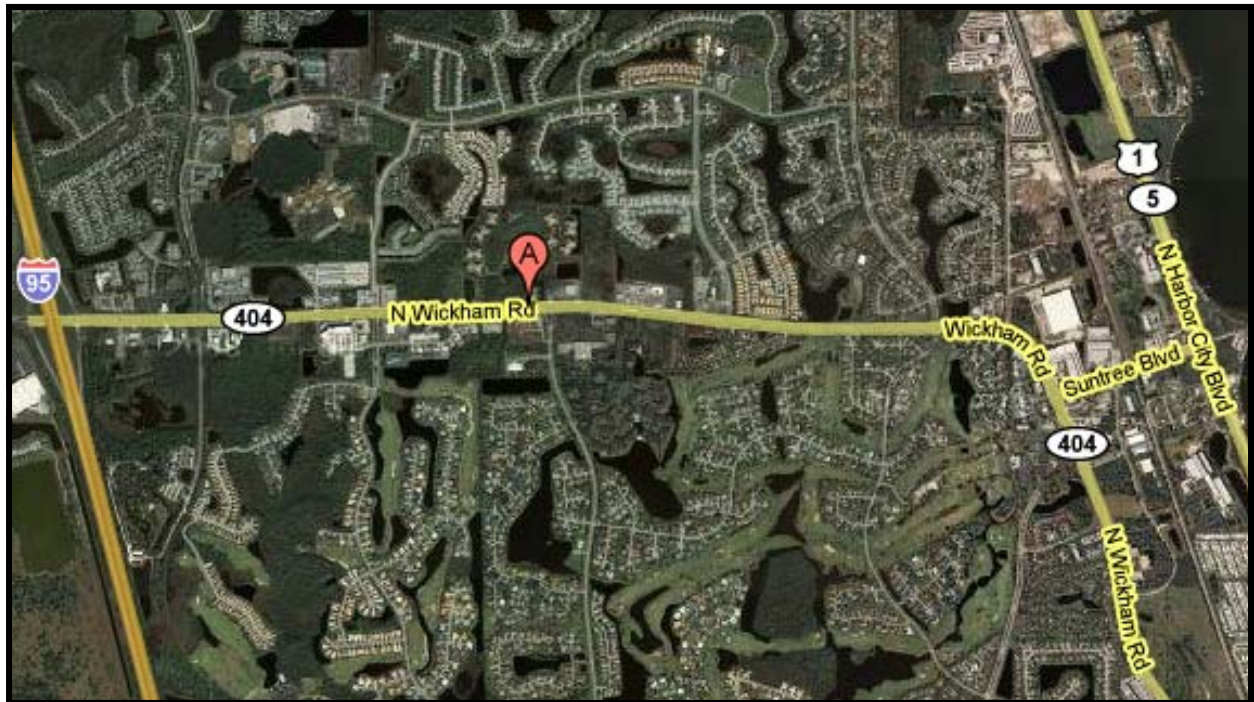
jeff@lightlecommercial.com

www.lightlecommercial.com

1398 S. BABCOCK ST.
MELBOURNE, FL 32901
FAX (321) 722-0581

AVAILABILITY:	4.37 acres, prime land directly on Wickham Road
PRICE:	\$1,750,000. ⁰⁰
IMPROVEMENT:	One of the few remaining parcels of vacant land in this trade area that is not yet developed. This land includes already approved site plan as all due diligence is complete.
COMMENTS:	Located directly on N. Wickham Rd. only minutes from I-95.

Information contained herein has been obtained from others and considered to be reliable; however, a prospective purchaser or lessee is expected to verify all information to his/her own satisfaction.



JEFF ROBISON
PARTNER

(321) **722-0707** EXT. 13
jeff@lightlecommercial.com



LIGHTLE COMMERCIAL
 • INCORPORATED •
 COMMERCIAL REAL ESTATE SERVICES

1398 S. BABCOCK ST. • MELBOURNE, FL 32901
 FAX (321) 722-0581
WWW.LIGHTLECOMMERCIAL.COM

*Information contained herein has been obtained from others and considered to be reliable;
 however, a prospective purchaser or lessee is expected to verify all information to his/her own satisfaction.*