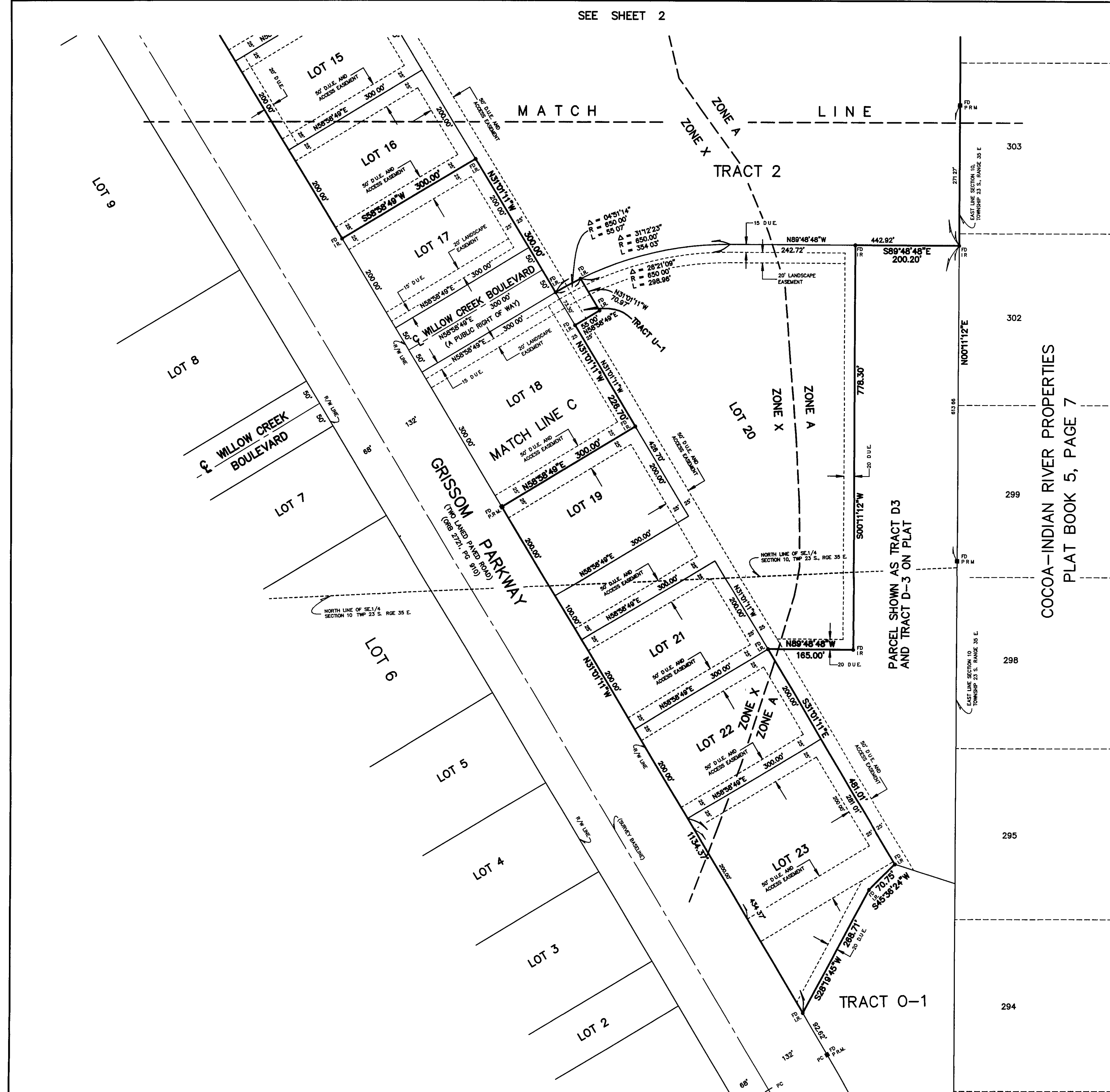


SEE SHEET 2



**BOUNDARY SURVEY OF:**

LOTS 13 THROUGH 16, LOTS 19 THROUGH 23, AND TRACTS 2, R-1, AND R-2, ALL AS SHOWN ON THE PLAT OF WILLOW CREEK COMMERCIAL CENTER - PHASE I AS RECORDED IN PLAT BOOK 51, PAGE 20 OF THE PUBLIC RECORDS OF BREVARD COUNTY, FLORIDA.

**SURVEYOR'S NOTES:**

- 1) THE BEARING SYSTEM AS SHOWN HEREON IS BASED ON A BEARING OF S.31°01'11"E. AS SHOWN ALONG THE CENTERLINE OF GRISSOM PARKWAY
- 2) AS PER FLOOD INSURANCE RATE MAP NO. 12009C0260 E. AND 12009C0195 F. INDEX DATED 11-19-97 THE ABOVE DESCRIBED PROPERTY LIES IN ZONES A AND X. THE APPROXIMATE BOUNDARIES OF WHICH ARE GRAPHICALLY DEPICTED HEREON
- 3)  $\bullet$  IR INDICATES FOUND 1/2" IRON ROD WITH PLASTIC CAP STAMPED LB 6762 UNLESS OTHERWISE SHOWN HEREON
- 4)  $\bullet$  PRM INDICATES FOUND 4"x4" CONCRETE MONUMENT WITH ALUMINUM DISK STAMPED "PRM PLS 4014" UNLESS OTHERWISE SHOWN HEREON
- 5) THE ABOVE DESCRIBED PARCEL OF LAND IS PRIMARILY VACANT AND CONTAINS 80.49 ACRES.
- 6) SEE SHEETS 3 AND 4 FOR VISIBLE UTILITIES ON SITE.

**LEGEND**

- B/O = Blow Off Valve
- BFP = Back Flow Preventer
- C = Calculated
- CBS = Concrete Block Stucco
- E = Centerline
- CLF = Chain Link Fence
- CLR = Clear
- CM = Concrete Monument
- CMP = Corrugated Metal Pipe
- C/O = Clean Out
- COL = Column
- CONC = Concrete
- COND = Covered
- D = Dead
- DH = Drill Hole
- DUE = Drainage and Utility Easement
- EL or ELEV = Elevation
- ENCH = Encroachment
- FD = Found
- FIN FL. ELEV = Finish Floor Elevation
- FPL = Florida Power and Light
- INV = Invert
- IP = Iron Pipe
- IR = Iron Rod
- LP = Light Pole
- (M) = Measured
- M = Meters
- MH = Man Hole
- N/D = Nail & Disk
- ORB = Official Records Book and Page
- P = Plat
- P.C. = Point of Curvature
- P.C.C. = Point of Compound Curvature
- P.C.P. = Permanent Control Point
- P.O.B. = Point of Beginning
- P.O.C. = Point of Commencement
- P.O.T. = Point of Termination
- PP = Power Pole
- P.R.C. = Point of Reverse Curvature
- P.R.M. = Permanent Reference Monument
- PROP = Proposed
- P.T. = Point of Tangency
- P.U.&D. ESMT = Public Utility & Drainage Easement
- PVC = Polyvinyl Chloride Pipe
- PVMT = Pavement
- RES = Residence
- R.P. = Radius Point
- R.C.P. = Reinforced Concrete Pipe
- R/W = Right-of-way
- SB = Setback
- SST = Southern Bell Telephone
- S/S MH = Sanitary Sewer Manhole
- SV = Sanitary Sewer Valve
- TYP = Typical
- VCP = Vitrified Clay Pipe
- WM = Water Meter
- WV = Water Valve
- $\Delta$  = Delta Angle

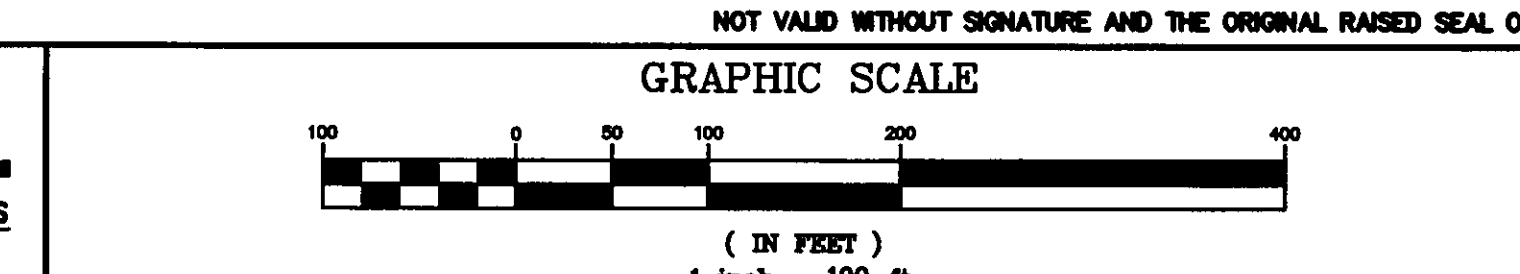
SHEET 1 OF 4 SHEETS

ALL THE FOREGOING SUBJECT TO ANY DEDICATIONS, LIMITATIONS, RESERVATIONS, RESTRICTIONS OR EASEMENTS OF RECORD NOT VALID WITHOUT SIGNATURE AND THE ORIGINAL RAISED SEAL OF A FLORIDA LICENSED SURVEYOR AND MAPPER.

| DATE | ORDER NO. | FB NO. | REVISIONS |
|------|-----------|--------|-----------|
|      |           |        |           |
|      |           |        |           |
|      |           |        |           |

|                                 |                                |
|---------------------------------|--------------------------------|
| DATE: 6/8/07                    | CERTIFIED TO: WILLOW CREEK LLC |
| ORDER NO. 23717                 |                                |
| F.B. NO. 612-26                 |                                |
| SCALE: AS SHOWN                 |                                |
| DWG. NO. FF-1414-07             |                                |
| CADD FILE WILLOWPLATEASTEND DWG |                                |

**Honeycutt & Associates, Inc.**  
 ENGINEERS • SURVEYORS • PLANNERS  
 5195 South Washington Avenue • Titusville, Florida 32780  
 (321) 267-8233 Fax (321) 269-7847  
CREATED BY: HUNTER, J. W.



CERTIFIED BY:   
 DENNIS W. WRIGHT  
 REGISTERED LAND SURVEYOR NO. 4014  
 STATE OF FLORIDA